

COUNCIL ON WORKFORCE INVESTMENT

FRIDAY, JANUARY 22, 2010
10:00 a.m. – 11:00 a.m.

GEF 1, ROOM A-415
201 E. WASHINGTON AVE
Madison, Wisconsin

EXECUTIVE COMMITTEE MEETING AGENDA

- I. Call to Order
- II. Approval of Minutes from October 6, 2009 – **ACTION**
- III. Finalize Committees and Membership - **ACTION**
- IV. WIA Plan Modification – **REPORT**
- V. WI Reauthorization – **REPORT**
- VI. Adjourn

To Access This Teleconference

Participants: Dial the Toll Free Number: **1-888-557-8511**; when prompted, enter the access code 4618034 **followed by the # sign**. Should you need assistance during your conference, please press *# for a list of menu options and *0 to obtain specialist assistance.

Interested parties may attend the meeting in person at the State Labor Building (GEF 1), Room A-415. All visitors to the State Labor Building must use the main entrance at 201 East Washington Avenue and obtain a visitors pass at the reception desk. This entrance is handicap accessible.

Meeting materials will be posted on the CWI web site at <http://www.wi-cwi.org/>. For questions about the agenda, contact Gary Denis, Department of Workforce Development, Division of Employment and Training by phone at 608-267-9704 or by email at gary.denis@dwd.wisconsin.gov. If you have special needs such as an interpreter or written materials in an alternative format, contact Kristy Budde at 608-266-9199 or kristy.budde@dwd.wisconsin.gov. (Text phone users may call the Wisconsin Telecommunications Relay System at 711 to request assistance.)



Agenda Item II.

Governor's Council on Workforce Investment Executive Committee

MEETING MINTUES

(Draft for CWI Executive Committee Approval)

October 6, 2009

Madison and Conference Call

1:00 – 2:00 pm

Members Present: Tim Sullivan (Chair), Bucyrus International, Inc.; Joel Rogers (Vice Chair), Center on Wisconsin Strategy, UW-Madison; Kathy Cullen for Dan Clancy, Wisconsin Technical College System; Kathryn Dunn, Helen Bader Foundation, Inc.; Roberta Gassman, Department of Workforce Development; Kim Kindschi, UW Extension; Richard Leinenkugel, Department of Commerce; Phil Neuenfeldt, WI State AFL-CIO; Lee Rasch, Western WI Technical College; Rolf Wegenke, WI Association of Independent Colleges and Universities; Dean Welch, IT Convergence.

Members Not Present: Tony Evers, Department of Public Instruction; Tina Koehn, United Migrant Opportunity Services, Inc.;

CWI Staff Present: Ron Danowski and Gary Denis

Others Present: JoAnna Richard, Karen Morgan, Linda Preysz, Dianne Reynolds, Department of Workforce Development.

CWI Executive Committee Website Link: <http://www.wi-cwi.org/executive/default.htm>

I. Welcome and Introduction

Chair Sullivan called the meeting to order and conducted the approval of the August 19, 2009 meeting minutes.

II. State Energy Sector Partnership Grant - Action

At the August meeting the committee agreed to support the Department of Workforce Development's request to submit a multi-state proposal to compete for a U.S. Department of Labor Energy Grant, on behalf of the Council on Workforce Investment (CWI). The Executive Committee agreed to serve in a coordination and oversight role.

Secretary Gassman provided a power point on the draft proposal, including the three strategies:

1. Energy Efficiency
 - Introduce two new apprenticeships – weatherization technician and energy auditor
 - Upgrade the skills and knowledge of skilled trade workers affected by energy and environmental policy
2. Renewables
 - Create new Wastewater Treatment Plant Operator Apprenticeship
 - Upgrade the skills and knowledge of skilled trade workers affected by energy and environmental policy

3. Smart Grid

- Retool and expand 4 apprenticeships – Electric Line Worker, Electric Metering Technician, Substation Electrician and Gas Technician
- Establish statewide uniformity, provide nationally recognized credential

III. Status Reports and Discussion of Subcommittee Options

At the August meeting, the Executive Committee discussed the Chair's proposal to develop four new subcommittees to CWI. The Chair recommended that three subcommittees be newly created to provide oversight and direct the sector initiatives in the areas of (a) advanced manufacturing, (b) health care, (c) energy, and a fourth subcommittee on performance.

Executive committee members support this strategy, but strongly suggest using existing committees that currently include CWI members for the sector initiatives, and also recommend that the Executive Committee be responsible for the fourth subcommittee's charge – performance.

The Executive Committee agreed to the following:

- The energy subcommittee will be represented by the Cabinet Energy Committee led by Judy Ziewasz, Office of Energy Independence.
- The healthcare subcommittee will be represented by the Select Committee on Healthcare Workforce Development led by Roberta Gassman, Secretary of the Department of Workforce Development.
- The manufacturing committee will be newly formed and a call for volunteers will be announced at the next full Council on Workforce Investment meeting.
- The performance committee will be represented by the CWI Executive Committee.

IV. The meeting was adjourned at 2:00 pm.

Agenda Item III.

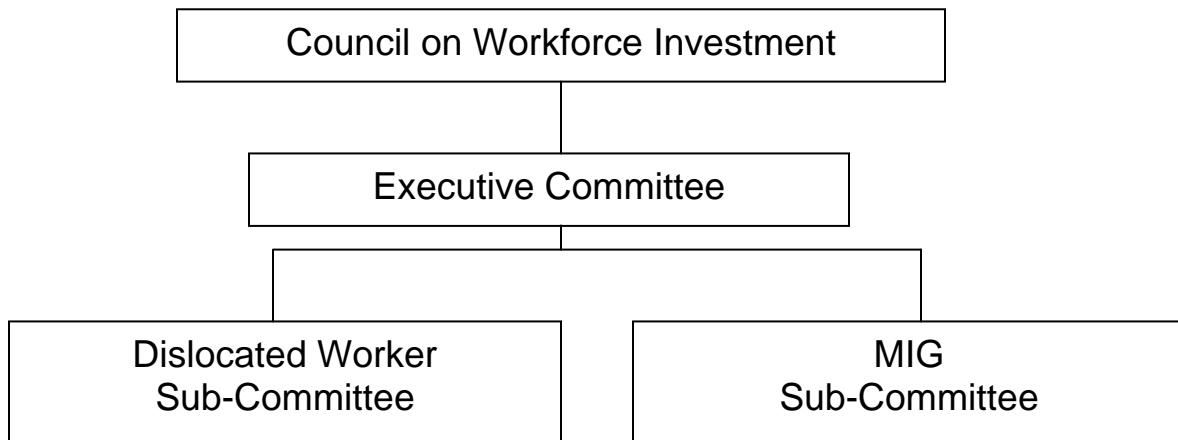
**Staff Proposal for
CWI Subcommittee Structure**

At the CWI Executive Committee meetings on August 19, and October 16 2009 a discussion focused on the establishment of additional subcommittees of the CWI to align and support the Sector Strategies Initiative. The discussion focused on a means to engage the CWI in the funding and performance accountability of Wisconsin's overall WIA system including activities conducted under the sector strategies initiative and funding and performance of workforce program recommendations made by the Council in 2008 that were addressed by Governor Doyle in the 2009 workforce plan.

The following proposal clarifies the changes recommended by the Executive Committee.

Current Committee Structure

The current CWI structure consists of one standing committee and two sub-committees:



Dislocated Worker Subcommittee:

Responsibilities: The Dislocated worker subcommittee is required under state administrative rules. Its purpose is to review applications for dislocated worker funding and make recommendations on funding to the department Secretary who has the final decision making responsibility.

Membership: co-chairs Phil Nuenfeldt (AFL-CIO) and Jim Haney (WMC; five CWI members including Jo Anna Richard (designate DWD), Jayson Chung (designate WTCS), Joe Leibham (Senate), Mark Reihl (Carpenters Union), Colleen Bates (local elected official).

Staffing: Annette Nekloa, DWD's Bureau of Workforce Training.

Medicaid Infrastructure Grant Subcommittee:

Responsibilities: The Council on Workforce Investment Medicaid Infrastructure Grant Subcommittee (CWI-MIG) advises the Department of Health Services (DHS) on the implementation of the State’s Medicaid Infrastructure Grant (MIG). The committee also monitors the implementation of the recommendations of the Managed Care and Employment Task Force (MCETF).

Membership: The committee has 21 members, with two CWI members; Josh Zepnik (Assembly) Chair of the MIG and Jeff Steran (Steran Management Co).

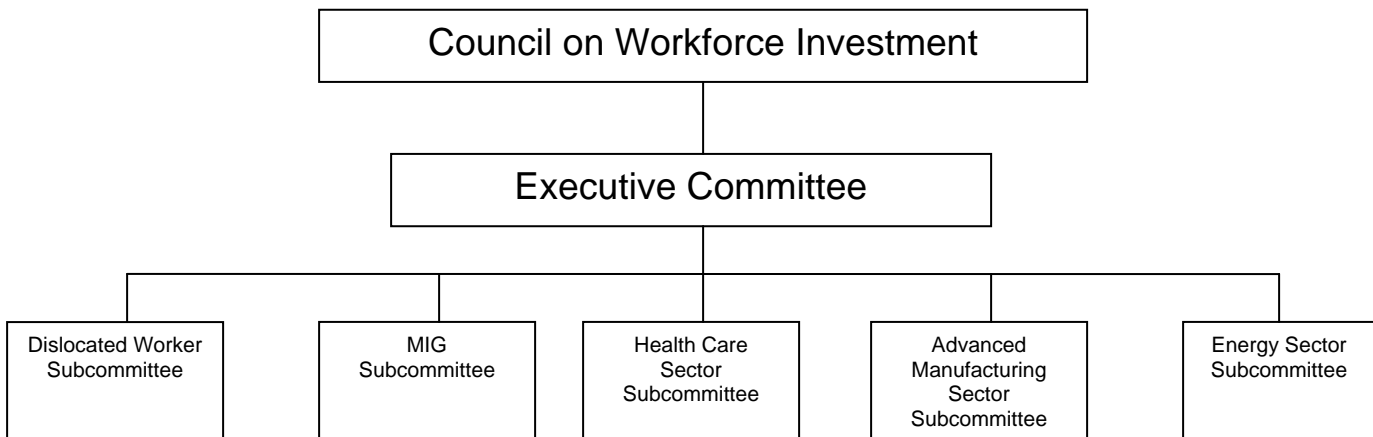
Staffing: DHS provides staffing to the MIG and Pamela O'Brien is the DWD liaison to the sub-committee.

Proposed Committee Structure

The proposed CWI committee structure would keep the current CWI Executive Committee and the two subcommittees of Dislocated Worker and MIG and form three additional state level industry sector subcommittees; one each for energy, advanced manufacturing and health care.

Rationale for new subcommittee structure;

- To support the three priority sector areas of the Wisconsin Sector Strategies Initiative,
- To avoid duplication and ensure coordination with existing policy bodies and advisory groups who provide input to DWD on industry needs.
- To allow the CWI Executive Committee to provide performance oversight of the subcommittees and a consistent process of monitoring WDBs performance.



The Executive Committee will assume responsibility for oversight of WIA performance and utilization of funds. No new sub-committee will be established.

Responsibilities: The responsibilities in this area will include:

- Review of performance on WIA local program spending and performance standards.

- Review of spending and performance outcomes for the Governor's Workforce Initiatives projects including, Emerging Industry Skills Partnerships, Manufacturing Skills Standards Certification and Opportunity Grants.
- Make recommendations to DWD on corrective actions as necessary.

Industry Sector Subcommittees:

Responsibilities: The primary roles of the three new industry sector subcommittees include:

- Define the Industry Partnerships at the state level based on a labor-market analysis; develop goals, a work plan, and target outcomes based on a clear identification of workforce challenges.
- Establish a mechanism to identify and track measurable goals.
- Develop a vision and plan for identifying and sustaining an industry sector leadership framework in the in the state over time, leverage financial resources and in-kind support to carry out the sector strategies, and promote ongoing communication between employers, workers, training provides, and service agencies.
- Anticipate and work to close industry skill gaps, develop and implement workforce training and development initiatives to improve the State's industry competitiveness and address common workforce challenges.
- Focus on developing and promoting middle skill jobs within the targeted industry sector, develop career pathways to allow employees to advance within the industry, develop or apply industry credentials, address the needs of special populations (low-income populations or those with barriers to employment), and assist educational and training institutions in aligning curriculum and programs to meet industry demands.
- Review performance/provide oversight of the Industry Sector Partnership grants and involvement in ranking proposals for funding.

Membership for Health Care Sector Subcommittee: Secretary Gassman, chair and Rolf Wegenke (WAICU), both CWI member, other members of CWI and members of the Select Committee on Healthcare Workforce Development. Attachment A identifies the current membership of the Select Committee.

Membership for Energy Sector Subcommittee: State Energy Sector Partnership (SESP) grant Leadership Team and members of CWI. The State Energy Sector Partnership Leadership Team is chaired by Judy Ziewacz of the Office on Energy Independence. The group currently has 24 members; six are members of the CWI. Membership includes business, labor, and state agencies, the UW, local WDBs and the Public Service Commission. Attachment B lists the membership of the SESP Leadership Team.

Membership for Advanced Manufacturing. Existing CWI members will be solicited for interest. In addition, representatives from Wisconsin Manufacturing Extension Partnership, organized labor and other stakeholders in the manufacturing industry will be recruited.

Staffing: The Secretary's Office Policy Advisor for Industry Sector Partnerships and RISE Policy Advisor, with staff support and assistance from the Bureau of Workforce Training, will provide staffing for all three sector strategy subcommittees.

Attachment A

Select Committee on Health Care Workforce Membership

<p>Roberta Gassman, Chair Secretary, DWD</p> <p>Kris Andrews, Director Federal Relations University of Wisconsin System</p> <p>Janice Atkinson Department of Public Instruction</p> <p>Stephanie Bloomingdale, Director Public Policy WI Fed. of Nurses & Health Professionals</p> <p>Fredi-Ellen Bove, Deputy Administrator Department of Health & Family Services</p> <p>Kathleen Cullen, Vice-President Wisconsin Technical College</p> <p>Sally Cutler, Director North Central WI Workforce Development Board</p> <p>Gina Dennik-Champion, Ex. Director Wisconsin Nurses Association</p> <p>Laura Dresser, Research Director Center on Wisconsin Strategy</p> <p>Celia M. Jackson, Secretary Department of Regulation & Licensing</p> <p>Russell King, President Wisconsin Homecare Organization</p> <p>Kathy Loppnow, RN, MSN, Director Health Occupations Education Wisconsin Technical College</p> <p>Sally Lundeen, Dean UW-Milwaukee, Nursing School</p>	<p>Paul Nelson, Vice President for Public Policy WI Assoc. of Independent Colleges & Universities (WAICU)</p> <p>Candice Owley, President WI Fed. of Nursing & Health Professionals</p> <p>Dian Palmer, President SEIU District 1199W/UP</p> <p>Tom Ryan, Bureau Director Department of Regulation & Licensing</p> <p>John Sauer, Executive Director WI Assn. of Homes & Services for the Aging</p> <p>Judeen Schulte, Chairperson Division of Nursing, Alverno College</p> <p>Tim Size, Executive Director Rural Wisconsin Health Cooperative</p> <p>Nancy Sugden, Director WI Area Health Education Centers</p> <p>Norma Tirado, President WI Society of Health Care Human Resources Professionals</p> <p>Yer Vang, Executive Assistant Office of State Employment Relations</p> <p>Judy Warmuth, Vice President Workforce Development Wisconsin Hospital Association</p> <p>Rolf Wegenke, President WI Assoc. of Independent Colleges and Universities (WAICU)</p>
---	---

Katharyn May, Dean
University of Wisconsin Nursing School
Clinical Science Center

Nancy McKenney, Director
Department of Health Services

Tom Moore, Executive Director
Wisconsin Health Care Association

Nancy Nankivil, Senior Vice President
Quality & Efficiency
Wisconsin Medical Society

Mark Thomas
Dept. of Health Services

Joan Wilk, Professor Emeritus
College of Nursing

Jackie Wells
WI Long Term Care Alliance
Director of Training and Workforce
Development, MCFI

Paul Wertsch, Immediate Past
President Wisconsin Medical Society

Dr. Mary Zwygart-Stauffacher, Interim
Dean
UW Eau Claire
College of Nursing & Health Sciences

Barb Fleisner, Executive Director
Centergy, Inc.

Reggie Bicha, Secretary
Dept. of Children and Families

Don Madelung
Herzing College

Attachment B

SESP Leadership Team

Marge Anderson, Associate Director Energy Center of Wisconsin	Walter Kunicki, Senior Vice President Wisconsin Energy Company
Lyle Balistreri, President Milwaukee Building & Construction Trades Council and Chairman of Wisconsin State AFL-CIO	Kathy Kuntz, Director of Energy Programs Wisconsin Energy Conservation Corp.
Rhandi Berth, Associate Director WI Regional Training Partnership/ Big Step	Richard Leinenkugel, Secretary Wisconsin Department of Commerce
Earl Buford, Executive Director WI Regional Training Partnership/ Big Step	Michael Morgan, Secretary Department of Administration
Eric Callisto, Chairperson Public Service Commission	Karen Morgan, Director Apprenticeship Standards Bureau, DWD
Forrest Ceel, President Electrical Workers IBEW Local 2150	Phil Neuenfeldt, Secretary Treasurer AFL-CIO
Daniel Clancy, President Wisconsin Technical College System	Rod Nilesestuen, Secretary WI Dept of Ag, Trade & Consumer Protection
Matthew Frank, Secretary Wisconsin Department of Natural Resources	Joel Rogers, Director Center on Wisconsin Strategy
Roberta Gassman, Secretary Department of Workforce Development	Michael Rowe, Vice President American Transmission Company
Ken Grant, Director DWD Office of Veterans Services	Chris Ruud, Executive Vice President Ruud Lighting (Representing CWI)
Ken Iwinski, General Counsel Energy Composites	Richard Schlimm, Executive Director Wisconsin Community Action Program
Mark Kessenich, Director, Development/Planning Milwaukee Area WIB (WWDA/WAJTE)	Judy Ziewacz, Director Office of Energy Independence
Julia Taylor, President Greater Milwaukee Committee	Don Rouse, Vice President of Corporate Operations, Kohl's Dept. Stores, Retired
	Thomas Burse, Owner & CEO Buveck Consultants LLC

Attachment C

Advanced Manufacturing

Gayle Kugler, Director WI Small Business Development Centers WI Entrepreneurs' Network	Bob Borremans, Executive Director Southwest WI Workforce Development Board
Kim Kindschi UW-Extension	Rolf Wegenke, Ph.D., President and CEO WI Assoc. of Independent Colleges & Universities
Bill Chaudoir, Executive Director Door County Economic Development Corp	Dick Leinenkugel, Secretary Dept. of Commerce
Susan Hatch, President Hatch Staffing Services	Dr. Lee Rasch, President Dept. of Corrections
John Heyer, President and Owner Kettle Moraine Coatings, Inc.	Kent Olson, President/Owner Olson Tire & Auto Service, Inc.
Henry Sanders, Jr. Propel Wisconsin Innovation	

Agenda Item IV.

Summary on Workforce Investment Act State Plan Modification

As was announced at the Council meeting on December 18, 2009, the State must submit to the U.S. Department of Labor (DOL) a modified Workforce Investment Act (WIA) State Plan. The law states that:

Modifications "are required when:...(2) There are changes in the Statewide vision, strategies, the methodology used to determine local allocation of funds, reorganizations which changed the working relationship with system employees, changes in organizational responsibilities, changes to the membership structure of the State Board... and similar substantial changes to the State's workforce investment system."

The changes from the previous plan in the draft WIA State Plan Modification are:

- The methodology used to determine local allocation of funds. The formula allocation is explained in detail along with a new Allocation Guide on processes and procedures;
- Waiver implementation that affects service delivery strategies. This includes a revised State policy on waivers, and new policies on Customized Training and On-the-Job Training; and
- Final Common Measures performance goals for program year 2009-2010. The previous plan required projected performance goals. Since then, negotiations have been completed with DOL for the State's performance levels. This is the first year the State is implementing Common Measures as part of the waiver plan approvals.

WIA also requires a process for public input in state plans and modifications including:

- State planning procedures and roles: a. "The State Board shall assist the Governor in (1) development of the State plan."
- c. "Plan development must also include an opportunity for stakeholder and public review and comment." Public comment must include an opportunity for comment by representatives of business, representatives of labor organizations, and chief elected official(s)..." "... that the State Board makes information regarding the State Plan and other State Board activities available to the public through regular open meetings."

These are the next steps to meet the process requirements:

- Council/Executive Committee notification and review
- Issue draft plan modification for 30-day public review and comment
- Change draft plan based on public review and comment
- Submit plan to DOL and issue State policies
- End of 90-day DOL review